



GRAND RAPIDS

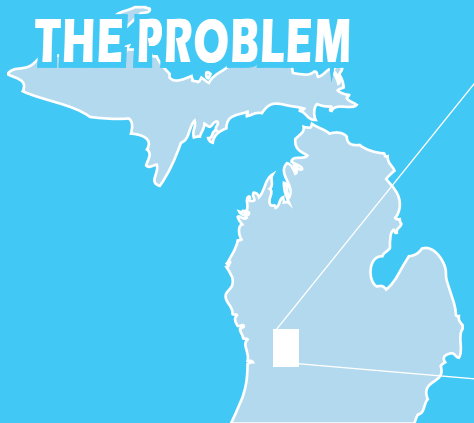
African American Health Institute

ECONOMIC IMPACT OF

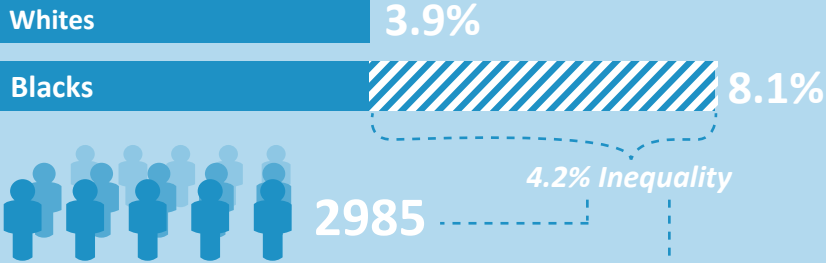
STROKE *in Kent County, Michigan*



THE PROBLEM

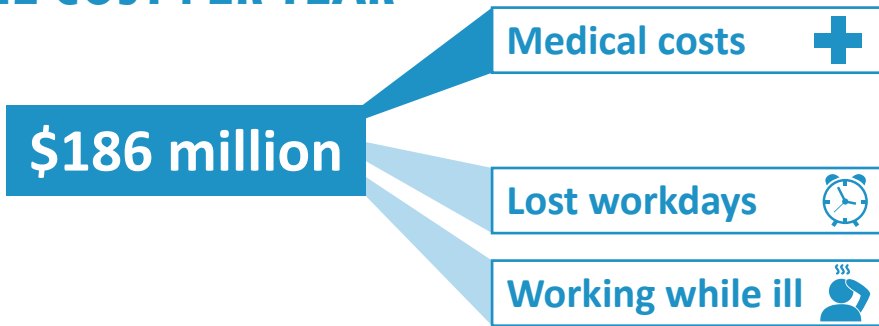


Kent County Incidence Rates



Blacks are over **1.5X** more likely to die of stroke

THE COST PER YEAR



CALL TO ACTION

Sedentary lifestyle, poor nutrition, and smoking all contribute to stroke.



For every **\$1** spent on community-based programs that focus on improving physical activity, nutrition, and smoking prevention, **\$5.60** is returned to the community.

